

Specifications

Loader	
Item	Performance
Operating Weight	17500kg
Bucket Capacity	3.0m3
Rated Load	5000kg
Breakout Force	170kN
Static Tip Load	≥10t
Bucket Width	3000mm

Dimensions and Capacities	
Item	Performance
Length, inc Bucket	8185mm
Wheelbase	3300mm
Bucket Width	3000mm
Articulation Angle	±35°
Tyres	23.5-25-16PR
Max. Dump height@45 degree 45°	3090mm
Outside to outside width of wheels	2850mm
Wheel center to wheel center	2250mm
Min. turning radius outside rear wheel	7300mm
Min. turning radius outside bucket	6400mm
Fuel Tank Capacity	295L
Hydraulic Oil Capacity	190L

Engine	
Item	Performance
Engine Make/Model	DF series CUMMINS/6CTA8.3-C215, Euro II emission certified
Engine Power	215hp 160kW/2200r/m
Engine Displacement	8.3L
Number of Cylinders	6
Type	Six cylinder,inline,water-cooled, turbocharged

Transmission	
Item	Performance
Transmission Type	Semi-automatic power shift, countershaft type with softshift in range and direction
Transmission Make	XCMG
Model	MYF 200
Travel Speed	
Forward	
1st gear	6.5Km/h
2nd gear	11Km/h
3rd gear	24Km/h
4th gear	38Km/h
Reverse	
1st gear	6.5Km/h
2nd gear	11Km/h
3rd gear	24Km/h
Torque Converter Type	3-elements, single-stage single phase
Stall Torque Ratio	2.55
Brakes	External Dry Disc Brakes
Service Brake	Air-over-hydraulic caliper disc type four wheel brake
Parking Brake	Air actuated caliper disc type



GOLDBUG
EQUIPMENT

LW500K



CONTACT YOUR LOCAL DEALER

GOLDBUG EQUIPMENT

Phone: +61 419 197 285

simon@goldbugequipment.com

www.goldbugequipment.com



LW500K

Introducing the K Series Loader

For some time XCMG has been working and developing a product to provide our clients with more: More refinement, More power, More capability and More comfort. Now XCMG delivers with our new K series Loader.

The new K series Loaders offers you a complete product line up from 1.6 ton through to the 8 ton load rated machines.

The K Series Loader Safety



New designed ROPS and FOPS certified Cabins with beacon as standard equipment



Rexroth single lever joy stick control with safety lock out and safe lock hand brake as standard equipment

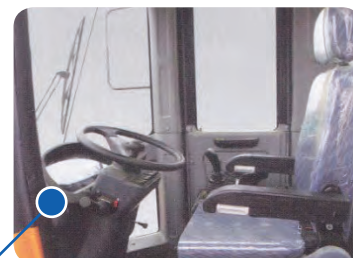


Safety stickers and hazard area's painted, for safer working conditions

The K Series Loader Operator Comfort



New designed cabin layout with superior air suspension seating and arm rests suitable for longer operations for less operator fatigue

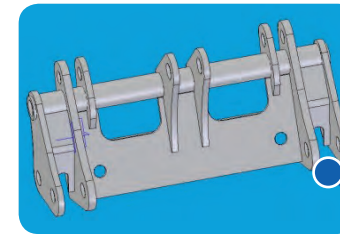


Ducted cabin air conditioning suitable for any extreme conditions designed with operator comfort in mind

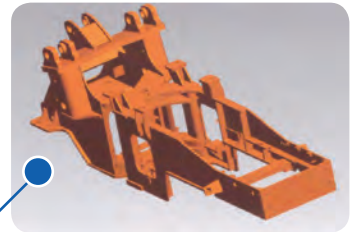


New instrument panel with high quality VDO gauges for accurate real time machine diagnosis

The K Series Loader Features



The new K series offers a new heavy duty chassis for long service life using XCMG lasted design technology



New designed hydraulic quick hitch for better multi tooling options and 3rd Function Hydraulics as Standard Equipment on LW300K

Tropical radiator package now standard, better suited for extreme temperature and harsh conditions



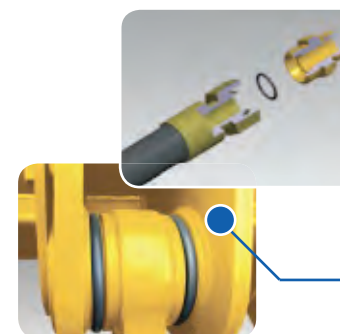
Greater horse power option through Cummins to give you greater productivity and service life



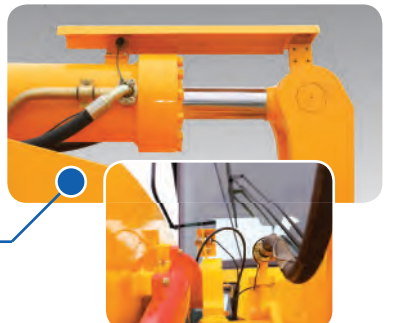
Power transmission strong and reliable XCMG MYF200 power shift transmission with semi Auto and KD function



Hydraulic hoses with DIN 24 cone plus)-ring face seals provide superior, leak free performance and prolong hose assembly life



Auto boom kickout device stops the boom at preset height automatically to protect the operator from mechanical impact for reduced operator fatigue



XCMG axles for superior performance, strength, reliability and service life

